

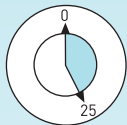
## Regrowth Application

Recommended for covering regrowth of your natural colour in the root area.

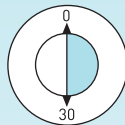
1. Carry out skin sensitivity/allergy test.

2. Wearing the gloves provided, apply WATER COLOUR foam to the root area only. Put on the cap, securing it firmly to prevent dripping. Stay in a warm environment ensuring the solution does not dry out under the cap.

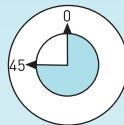
3. Follow the timing table below for the colour depth you require.



Up to 25 mins  
light coverage



30 mins  
medium coverage



45 mins - 1 hour  
complete grey coverage

4. To refresh the colour on the rest of your hair reserve the remaining foam for the ends. Ten minutes before the end of the colouring process remove the cap and quickly distribute the remainder of the foam evenly through your hair, massaging it to the ends ensuring it is covered evenly. Replace the cap over your hair.

5. Rinse the colour from your hair until the water runs clear. Shampoo your hair using your usual shampoo and rinse thoroughly again. Apply conditioner and leave in for at least one minute to restore the P.H. balance. Rinse and style as normal.

## Statutory Cautions

Please read the instructions carefully before use. Avoid contact with eyes. Rinse immediately if product comes into contact with eyes. Do not use to colour eyelashes or eyebrows. Use processing hat and gloves provided and protect clothing during the colouring process. Shampoo your hair well after use. This product does not contain p-phenylenediamines but does contain other potential sensitizers which can still produce allergic reaction, particularly in those already sensitised to p-phenylenediamines. Do not use on damaged or irritated scalp.

## Techniques to Ensure Good Coverage

Because the dyes are water based, the process adopts a different technique than with chemical dyes. The method and precautions in application are important and the instructions need to be followed carefully.

Please note also that the colour results and duration may be affected by your natural colour, the condition of your hair and any previous treatments. Water Colour may be used over other hair colourants but not over colour restorers, metallic dyes and compound henna.

- For maximum grey coverage the dye must be applied as a permanent dye - that is applied to clean dry hair. (Used in this way the colour will last indefinitely but of course you will need to treat re-growth)
- Over dilution: to avoid over dilution use warm water (not too hot to scald), place half the quantity of water in the mixing bottle; add the powder and then top up with the water to just below the mixing level line.
- Make sure that the hair is kept moist under the cap throughout the process - if the solution dries out it will stop working.
- Keep the dye on longer if necessary (up to one hour).
- Do not use conditioner or a "two-in-one" shampoo during the wash prior to using the dye.
- Daniel also recommends using lemon juice in the last rinse to ensure the hair is clear of any contaminants.

For more detailed information or colour advice, please refer to Daniel's booklet, tips and health information on our website.

[www.danielfieldmailorder.co.uk](http://www.danielfieldmailorder.co.uk) or write to:

Daniel Field Direct Ltd, PO Box 67, Ermington, IVYBRIDGE, Devon, PL21 9ZJ

## Ingredients-Advanced Water Colour

All Water Colour Contains:

- sodium dodecyl sulphate
- sodium percarbonate
- sodium sulphate
- sodium silicate
- sodium lauroyl sarcosinate
- xanthan gum

May contain (depending on shade):

- p-toluene diamine sulphate
- m-amino phenol sulphate
- 4-amino-2-hydroxytoluene sulphate
- p-aminophenol sulphate
- 2,4-diaminophenoxyethanol hel
- 4-amino-m-cresol 1
- 2-amino 6-chloro-4-nitrophenol sulphate
- 2-methyl-5-hydroxyethylaminophenol
- 4-amino-2-hydroxytoluene

DANIEL FIELD  
ORGANIC AND MINERAL HAIRDRESSING

Daniel  
Field

LONDON

## NATURAL COLOURS

Advanced Formula Water Colour

*This revolutionary ppd-free formula is unique to Daniel Field. Like my original Water Colour it penetrates the hair cuticle without disturbing the hair's structure or integrity. The result is long lasting natural textures and enriched colour leaving your hair healthy, shiny, silky and more manageable.*

*Water Colour was developed originally to meet the challenge of creating the world's gentlest, safest, purest and most natural looking colours, capable of up to 100% grey coverage yet without the use of damaging chemicals. Daniel Field Water Colour contains no ammonia, alcohol, ppd or added bleaching agents. I have continued my research to improve and maintain the highest specification and now, with the advent and availability of even more advanced ingredients I am able to bring you "Advanced Formula Water Colour".*

### Simple to use

Just add the powder to warm water [water first then powder] shake for at least one minute to mix then apply. By adjusting the length of time you leave the solution on, you can vary the intensity of the colour and the depth of coverage. You may also vary the intensity of colour in other ways. See "Daniel's Tips" available in leaflet form and on our website [www.danielfieldmailorder.co.uk](http://www.danielfieldmailorder.co.uk)

### Before Starting

Please read all the instructions carefully to ensure you select the best method suited to your requirements. Always carry out the skin sensitivity/allergy test and strand test outlined in this leaflet at least 48 hours before colouring your hair. For best results wash your hair the day before applying the colour to remove all styling products and residues. Prior to application avoid two-in-one shampoos or conditioners. Dry hair thoroughly. Protect clothes and furnishings from accidental staining. Use old towels if possible. Excess product can be removed from your skin and hairline with dampened cotton wool and shampoo.

This pack contains:  
Natural Colours Powder (7-8gme dependent on shade)  
Natural Colours Applicator Bottle  
Application Nozzle  
Plastic Gloves and Cap

## Skin Sensitivity/Allergy Test

Benefitting from even gentler ingredients and the absence of p-phenylenediamines (ppd) Advanced Formula Water Colour is less likely to trigger allergic sensitisation.

However, skin patch testing is an essential part of the process of applying any dye or cosmetic product because individuals can develop intolerance to any substance at any time – whether man-made or natural. Apply the test as described in this leaflet at least 48 hours prior to use.

### Do not use on damaged or irritated scalp.

1. Take a tiny pinch of WATER COLOUR powder from the vial and mix it with a drop of warm water on a saucer. Reseal the vial immediately. Do not allow the remaining powder to get wet.

2. Wash a small area of skin inside your elbow, dry gently but thoroughly. Apply a drop of Water Colour mixture to the area with cotton wool and allow to dry. Without washing, covering or touching leave for AT LEAST 48 hours (Please be aware that in some cases the skin sensitivity/allergy test can take longer in certain individuals).

3. If during this period you experience any irritation, redness, swelling or burning, it is likely you are allergic to an ingredient in this product and should not use it.

## Strand Test

To check the timing and preview the result use the rest of the mixture left over from the sensitivity test.

1. Clip back hair leaving a 1cm strand free. Wearing the gloves provided, apply the mixture to the whole strand. If you wish to match your existing colour, apply to the regrowth area avoiding the scalp - remember the sensitivity test is not yet complete.

2. Using the clock guides in this leaflet, start timing.

3. When your chosen time is up, wipe the excess product from the strand, rinse and dry.

4. Insufficient coverage? Increase the development time up to a maximum of 1 hour. Colour result too rich? Decrease the development time by up to 10 minutes.

5. Rinse and reserve the gloves for main application.

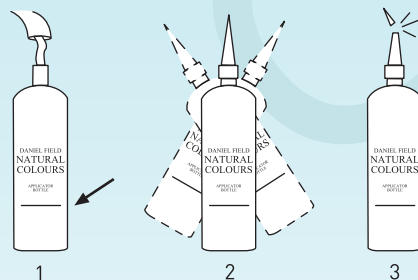
## Preparing Water Colour

1. Pour approximately half the quantity of warm water (not too hot to scald) into the applicator bottle.

2. Empty all of the powder from the vial into the applicator bottle, then add more warm water to bring the mixture up to just below the 'fill level' line. Take care not to overfill. Screw on the applicator nozzle securely.

3. Shake the solution vigorously for at least one minute until the sound of liquid can no longer be heard and no movement felt inside the bottle. The mixture has now developed into WATER COLOUR foam.

4. Holding the bottle over the sink to catch any excess colourant, cut off the tip. You are now ready to start application.



## Special Note

The appearance of the powder in the vial and when mixed with water will not be representative of the final shade outcome on your hair and may indeed appear quite unappealing.

Watercolour is a Semi, a Demi, or a Permanent. Watercolour lasts as long as you require:

- 1) Applied to damp hair it is semi-permanent. (Lasts up to 6 washes. No grey coverage).
- 2) Applied to well towel-dried hair it lasts up to 21 washes and covers up to 50% grey.
- 3) Applied to dry hair it is a permanent tint and colours up to 100% grey.

The instructions given in this leaflet are in respect of permanent application.

## Full Head Application (Permanent)

Apply to clean and completely dry hair that has been washed the day before using only shampoo. Use this method if this is the first time you have used Daniel Field WATER COLOURS or if a previous application has faded.

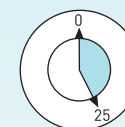
1. Wearing the gloves provided, apply the foam to the roots of your hair at approximately 2.5cm intervals. Distribute the remainder of the foam evenly through your hair massaging it to the ends ensuring that it is covered evenly.



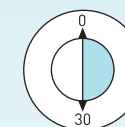
2. Pile your hair on top of your head and put on the cap, securing it to prevent dripping.

3. Stay in a warm environment ensuring the solution does not dry out under the cap.

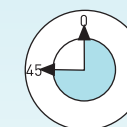
4. Follow the timing table below for the colour depth you require:



Up to 25 mins  
light coverage

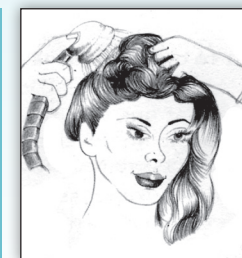


30 mins  
medium coverage



45 mins - 1 hour  
complete grey coverage

5. Rinse the colour from your hair until the water runs clear. Shampoo your hair using your usual shampoo and rinse thoroughly again. Apply conditioner and leave in for at least one minute to restore the P.H. balance; rinse and style as normal.



Tip; a drop of lemon juice in your conditioner increases the shine.