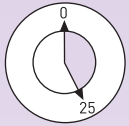


## Regrowth Application

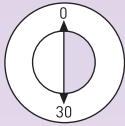
Recommended for covering regrowth of your natural colour in the root area.

1. Wearing the gloves provided, apply **NATURAL COLOURS** foam to the root area only. Put on the cap, securing it firmly to prevent dripping. Stay in a warm environment ensuring the solution does not dry out under the cap.

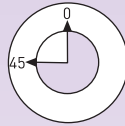
2. Follow the timing table below for the colour depth you require.



Up to 25 mins  
light coverage



30 mins  
medium coverage



45 mins - 1 hour  
complete grey coverage

3. To refresh the colour on the rest of your hair reserve the remaining foam for the ends. Ten minutes before the end of the colouring process remove the cap and quickly distribute the remainder of the foam evenly through your hair, massaging it to the ends ensuring it is covered evenly. Replace the cap over your hair.

4. Rinse the colour from your hair until the water runs clear. Shampoo your hair using your usual shampoo and rinse thoroughly again. Apply conditioner and leave in for at least one minute to restore the P.H. balance. Rinse and style as normal.

## STATUTORY CAUTION

Please read the instructions carefully before use. Avoid contact with eyes. Rinse immediately if product comes into contact with them. Do not use to colour eyelashes or eyebrows. Use hat and gloves provided and protect clothing during the colouring process. Shampoo your hair well after use. This product contains phenylenediamines which may cause an allergic reaction. Always carry out a sensitivity and strand test 48 hours prior to use. Do not use on a damaged or irritated scalp.

## Water Colour Ingredients

All Water Colours contain:

- Sodium Perborate
- Sodium Sulphate
- Sodium Silicate
- Sodium Lauryl Sulphate
- Sodium Lauroyl Sarcosinate
- Xanthan Gum

May contain (depending on shade):

- p-Phenylenediamine Sulphate
- m-Aminophenol Sulphate
- p-Aminophenol Sulphate
- 2-Chloro-p-Phenylenediamine Sulphate
- 1,5-Dihydroxynaphthalene
- 4-Amino-2-Hydroxytoluene
- 2-Amino-6-Chloro-4-Nitrophenol
- 2,6-Diaminopyridine
- D&C Violet 2
- HC Yellow 4

Please note: the colour results and duration may be affected by your natural colour, the condition of your hair and previous treatments. Natural Colours may be used over other hair colourants but not over colour restorers, metallic dyes and compound henna.

For further advice and information about my products, please write to:  
Daniel Field Direct, P.O.Box 67, Ivybridge, PL21 9ZJ  
or visit my website: [www.danielfieldmailorder.co.uk](http://www.danielfieldmailorder.co.uk)



LONDON

## NATURAL COLOURS

*I have developed Natural Colours to provide up to 100% grey coverage without the need for peroxide or ammonia. This unique formula penetrates deep into the hair shaft to give long lasting vibrant highlights and rich colour. Natural conditioning ingredients intensively moisturise leaving your hair healthy, exceptionally silky, shiny and manageable.*

### Simple to use

Just add warm water to NATURAL COLOURS powder, shake to mix and apply. By adjusting the length of time you leave Daniel Field Natural Colours on, you can vary the intensity of the colour and the depth of coverage.

### Before Starting

Please read all the instructions carefully to ensure you select the application method best suited to your requirements. Always carry out the skin sensitivity/allergy test and strand test, outlined in this leaflet, 48 hours before colouring your hair. For best results wash your hair before applying the colour to remove all styling product residues. Avoid two-in-one shampoos. Do not use a conditioner and dry hair thoroughly prior to application. Protect clothes and furnishings from accidental staining. Use old towels if possible. Excess product can be removed from your skin and hairline with dampened cotton wool and shampoo.

### This pack contains:

- Natural Colours Powder (500gE)
- Natural Colours Applicator Bottle
- Application Nozzle
- Plastic Gloves and Cap

## Skin Sensitivity/Allergy Test

A minority of people can develop allergies to hair colourants at any time. Whilst I have developed **NATURAL COLOURS** to be gentle, please carry out this test 48 hours prior to application.

1. Take a tiny pinch of **NATURAL COLOURS** powder from the vial and mix it with a drop of warm water on a saucer. Reseal the vial immediately. Do not allow the remaining powder to get wet.
2. Wash a small area of skin inside your elbow, dry gently but thoroughly. Apply a drop of the **NATURAL COLOURS** mixture to this area with cotton wool. Allow to dry and leave for 48 hours.
3. If during this period you experience any irritation, redness, swelling or burning, it is likely you are allergic to an ingredient in this product and should not use it.

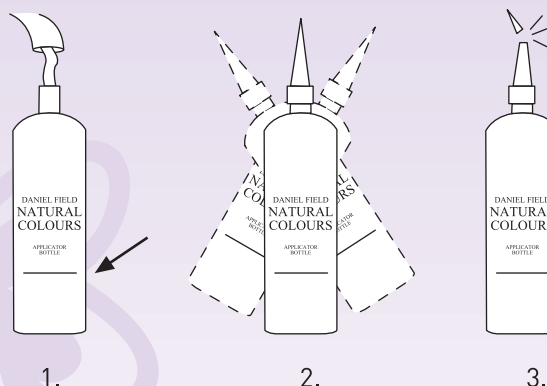
## Strand Test

To check the timing and preview the result use the rest of the mixture left over from the sensitivity test.

1. Clip back hair leaving a 1cm strand free. Wearing the gloves provided, if you are using **NATURAL COLOURS** for the first time, apply the mixture to the whole strand. If you wish to match your existing colour, apply to the regrowth area avoiding the scalp - remember the sensitivity test is not yet complete.
2. Using the clock guides in this leaflet, start timing.
3. When your chosen time is up, wipe the excess product from the strand, rinse and dry.
4. Insufficient coverage? Increase the development time up to a maximum of 1 hour. Colour result too rich? Decrease the development time by up to 10 minutes.
5. Rinse and reserve the gloves for main application.

## Preparing Natural Colours

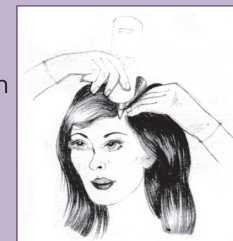
1. Pour a small quantity of warm water into the applicator bottle.
2. Empty all of the powder from the vial into the applicator bottle, then add more warm water to bring the mixture up to just below the 'fill level' line. Take care not to overfill. Screw on the applicator nozzle securely.
3. Shake the solution vigorously for at least one minute until the sound of liquid can no longer be heard and no movement felt inside the bottle. The mixture has now developed into **NATURAL COLOURS** foam.
4. Holding the bottle over the sink to catch any excess colourant, cut off the tip. You are now ready to start application.



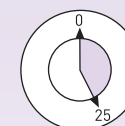
## Full Head Application

Apply to clean and completely dry hair. Use this method if this is the first time you have used Daniel Field **NATURAL COLOURS** or if a previous application has faded.

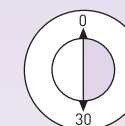
1. Wearing the gloves provided, apply the foam to the roots of your hair at approximately 2.5cm intervals. Distribute the remainder of the foam evenly through your hair massaging it to the ends ensuring that it is covered evenly.



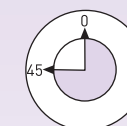
2. Pile your hair on top of your head and put on the cap, securing it to prevent dripping.
3. Stay in a warm environment ensuring the solution does not dry out under the cap.
4. Follow the timing table below for the colour depth you require.



Up to 25 mins  
light coverage

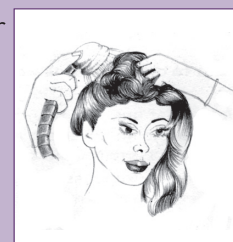


30 mins  
medium coverage



45 mins - 1 hour  
complete grey coverage

5. Rinse the colour from your hair until the water runs clear. Shampoo your hair using your usual shampoo and rinse thoroughly again. Apply conditioner and leave in for at least one minute to restore the P.H. balance; rinse and style as normal.



Tip, a drop of lemon juice in your conditioner increases the shine.